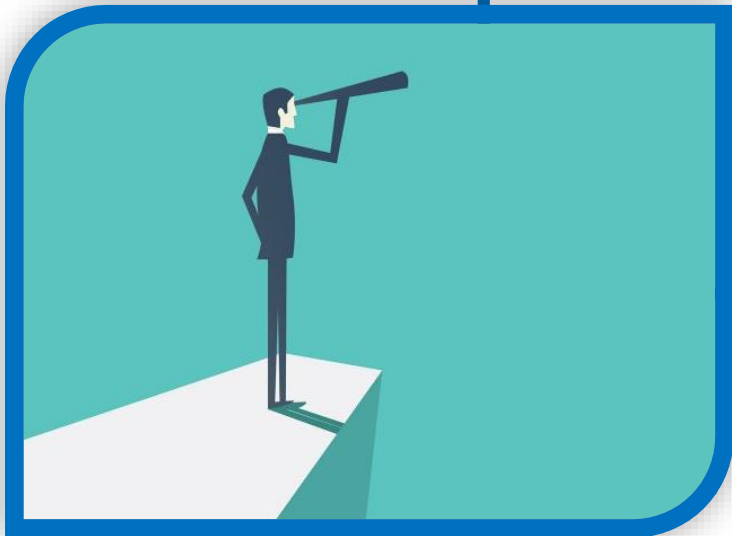


EMERGENCY RELIEF (ER) OVERVIEW

Today's Objectives

- Provide a high level overview of FHWA ER Program
- Understanding of Roles and Responsibilities within the ER Program



FHWA- Emergency Relief Program

- Governor or Presidential Declaration
- Federal-aid Highway and Facilities
- State must have eligible activities of \$700,000
- Project minimum per site \$5000
- Detailed Damage Inspection Reports (DDIR)
- Emergency Repairs and Permanent Restoration
- Reimbursement funding on a percentage basis
- Administered by MDOT (similar to FHWA Urban Systems Program)

ER is a special program authorized by Congress for the repair or reconstruction of Federal-Aid roadways which have suffered serious damage as a result of:

- Natural disasters over wide area

- Floods, hurricanes, earthquakes, tornadoes, severe weather, etc.

- Catastrophic failures from an external cause

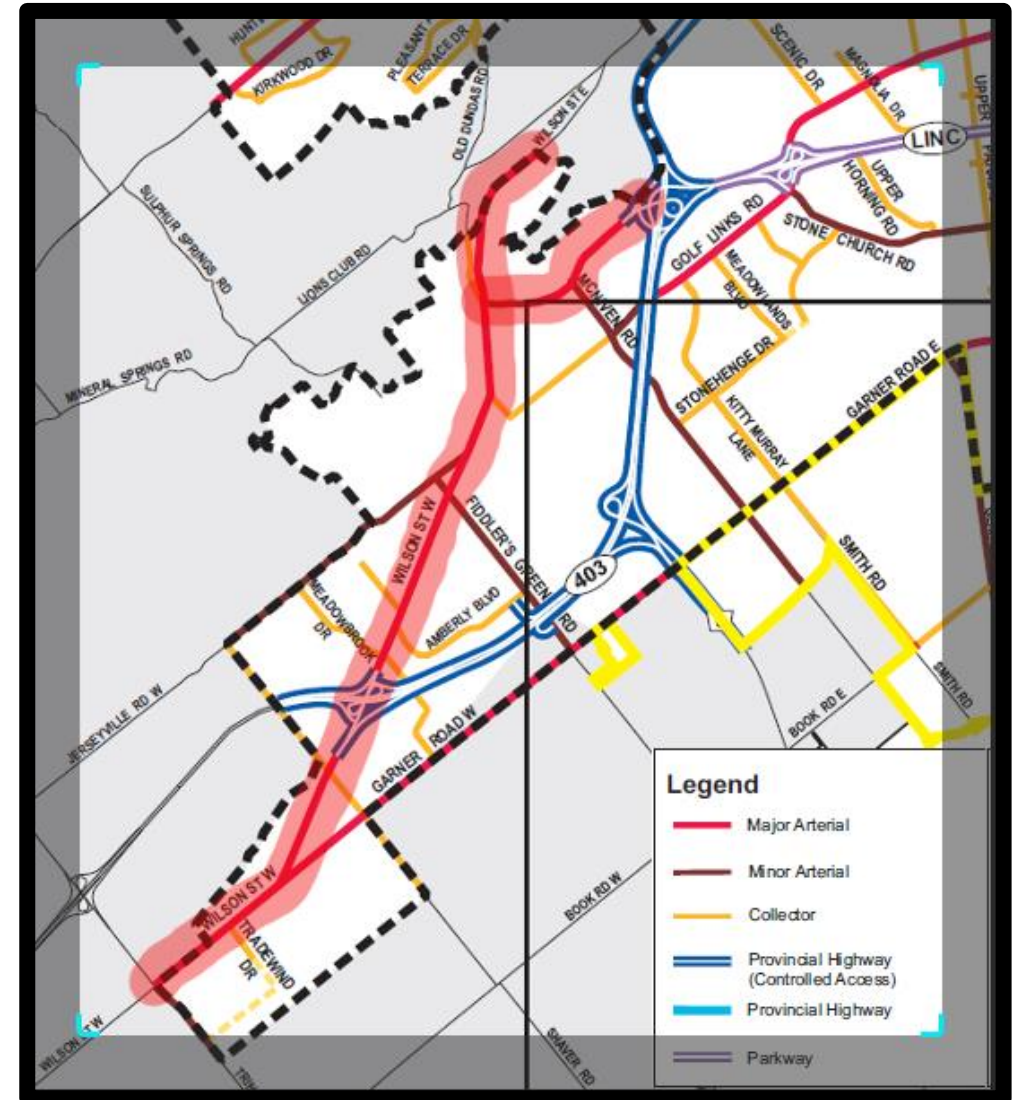
- Sudden and complete failure of a major element or segment of the highway system that causes a disastrous impact on transportation services
- Failure must be catastrophic in nature
- Cause of failure must be determined to be external to the facility

Example – bridge suddenly collapsing after being struck by a barge



Eligible Highways

- Federal-aid Highways
 - Interstate System
 - National Highway System
 - Public Roads ***not*** Classified as Local Roads or Rural Minor Collectors
- Roads on Federal Lands



GOMDOT Site for Maps

To correctly assess, and seek the proper funding for your Disaster relief, you need to know your roadway functional classification.

<https://mdot.ms.gov/portal/maps>

The screenshot shows the MDOT Maps website interface. At the top, there is a navigation bar with the MDOT logo and links for BUSINESS CENTER, SAFETY & EDUCATION, TRAVEL, PROJECTS, PERFORMANCE, PROGRAMS, DOCUMENTS, and ABOUT. A search bar is located on the right side of the navigation bar. Below the navigation bar, a banner image shows a road scene. The main content area is titled "Maps produced by the Mississippi Department of Transportation may be purchased online, in the MDOT Administration building or by mail." Below this, there is a "Search and Download Maps" section with several categories: State Highway, County, City, Rails, Truck Weights, State Highway Archive, Memorial Highways, Scenic Byways, Other Maps, Functional Class System Counties, Functional Class System Urban, and Functional Class System Small Urban. Each category has a list of map titles and a search bar. On the right side, there are three purchase options: "Buy Online" (with a mouse cursor icon), "On Location" (with a building icon), and "By Mail" (with an envelope icon). The "On Location" and "By Mail" options include contact information for the Map Sales Office.

MDOT
MISSISSIPPI DEPARTMENT OF TRANSPORTATION

BUSINESS CENTER SAFETY & EDUCATION TRAVEL PROJECTS PERFORMANCE PROGRAMS DOCUMENTS ABOUT

Search...

Maps produced by the Mississippi Department of Transportation may be purchased online, in the MDOT Administration building or by mail.

Search and Download Maps

State Highway

- Official Highway Map
- General Highway Map

County

Search...

City

Search...

Rails

- Rails Map Back Side
- Rails Map Front Side

Truck Weights

- Legal Truck Weight Map

State Highway Archive

Search...

Memorial Highways

- District 1 Memorial Map
- District 2 Memorial Map
- District 3 Memorial Map
- District 5 Memorial Map
- District 6 Memorial Map
- District 7 Memorial Map

Scenic Byways

- Beach Boulevard and Byways to Space
- Brice's Crossroads Battlefield - Chief Tishomingo Scenic Byway
- Gateway to History
- Grand - Gulf Raymond Scenic Byway
- Great River Road
- Highway 605 and 67
- Natchez Trace Parkway
- Noxubee Hills Route
- William Faulkner Scenic Byway

Other Maps

- Hurricane Evacuation Map
- MDOT Commission and Maintenance Districts
- National Highway Map - Statewide
- National Highway Map - Inset Page 1
- National Highway Map - Inset Page 2
- National Network
- Primary Arterial System
- State Designated State Maintained
- Vision 21 Map

Functional Class System Counties

Search...

Functional Class System Urban

Search...

Functional Class System Small Urban

Search...

Purchase Maps

Buy Online

On Location

MDOT Administration building
401 North West Street, Room 1067
Monday - Friday 8:00 am to 5:00 pm.

By Mail

Mississippi Department of Transportation
Map Sales Office
Post Office Box 1850
Jackson, MS 39215-1850
Phone 601-359-7045

3:52 PM
12/6/2019

Two Major ER Categories

1. Emergency Repair Work

- During or immediately following a disaster to:
 - restore essential traffic, or
 - minimize the extent of damage, or
 - protect the remaining facilities
- Properly documented costs will later be reimbursed once the FHWA Division Administrator makes a finding that the disaster and the work are eligible for ER funding
- Can begin immediately and does not require prior approval from FHWA*
- **May be reimbursed at 100% federal share in the first 180 days after the occurrence of the disaster**
- **Subsequently may be reimbursed pro-rata federal share**



Two Major ER Categories

2. Permanent Repairs or Restoration

- Repairs undertaken after the occurrence of a disaster to restore the highway to its pre-disaster condition
- **Projects must be submitted to MDOT and included in list of project sites and costs within 2 years of the event**
- Cost may not exceed the cost to repair or reconstruct a comparable facility
- Must have prior FHWA approval and authorization, unless done as part of emergency repairs
- **Subsequently may be reimbursed pro-rata federal share**

Emergency Relief Program

Not Intended to:

- Pay for All Repairs
- Relieve Maintenance Responsibility of Agency with Jurisdiction
- Replace Insurance

Not Intended to Replace Other Funding:

- Bridge Replacement Program
- Scheduled/Programmed Work
- Add Capacity
- Correct Non-Disaster Deficiencies
- Improve Facility



Eligible Expenses and Documentation

- Detailed Damage Inspection Report (DDIR) prepared - **must be signed by FHWA, MDOT, and the LPA**
- Actual costs - must be documented and maintained
- LPA – State Agreement required – prepared by MDOT (LPA MOA)
- State Project Number required – obtained by MDOT (Following Activation)
- Documentation must be maintained for 5 years

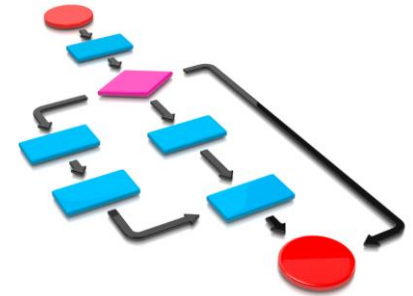
Examples of Ineligible ER Projects

Include but are not limited to:

- Heavy maintenance--Damage estimates under \$5,000 per site
- Applicant-owned material
- Prior scheduled work
- Costs associated with evacuation activities prior to a disaster (traffic control & management)
- Adjustment to signs and signal equipment that does not require repair or replacement of a major item

GENERAL GUIDELINES

Process for Applying for FHWA ER



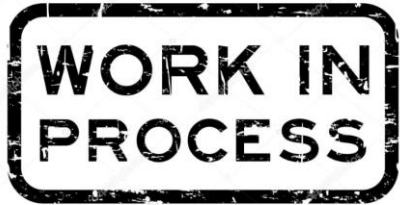
1. Local responsibility to assess damages and advise MDOT

- *MDOT and FHWA have established Damage Assessment Teams*
- *Local agency and MDOT arrange for Damage Assessment Team to conduct site visit and perform inspections*
- *Local agency assigns a local staff member to ride with the MDOT/FHWA Assessment Team*
- *Detailed Damage Inspection Report (DDIR) prepared*
- *DDIR must be signed by FHWA, MDOT and Local Agency Representative*

Process for Applying for FHWA ER

2. Emergency repairs may proceed in advance of DDIR or approval and authorization, but the following must occur before reimbursement:

- *FHWA Needs to be involved Day 1*
- *Early Collaboration with MDOT and FHWA*
- *DDIR prepared*
- *Work completed (only to re-establish essential traffic flow, or stop further damage to the roadway)*
- *Local agency submits cost documentation to MDOT*
- *MDOT review*
- *LPA-MDOT Agreement prepared by MDOT and executed*
- *MDOT requests authorization from FHWA*
- *Once authorized MDOT reimburses Local agency for eligible and documented costs*



Process for Applying for FHWA ER



3. Permanent Repair or Restoration

- *Will be carried out under the LPA-MDOT Agreement*
- *LPA-MDOT Agreement prepared and executed*
- *Contracts will be coordinated through MDOT following standard LPA-PDM project procedures*
- *Must be documented on DDIR*
- *MDOT review*
- *Must be authorized by MDOT and FHWA prior to start of any work or advertisement or solicitation of bids*
- *MDOT requests authorization from FHWA*
- *Once authorized MDOT reimburses Local agency for eligible and documented costs*
- *Local agency submits cost documentation to MDOT*

DOCUMENTATION & CONTACT INFORMATION

MDOT's LPA Division Website

Website: <https://mdot.ms.gov/portal/LPA>

Emergency Relief Projects heading contains a listing of helpful information that will help in navigating the ER project process.

The MDOT LPA Division oversees the planning, design, and construction of Local Public Agency (LPA) projects funded by the Federal Highway Administration.

Lee Frederick : State LPA Engineer
Phone: 601-359-7031

Paula Morgan : TAP Coordinator
Phone: 601-359-7222

Nikki Baker : LPA Office Coordinator
Phone: 601-359-7702

Donna Ellis : Special Projects
Phone: 601-359-7217

LPA CSU Documents

- > Advertisement & Selection
- > Construction Engineering & Inspection
- > Consultant Operating Procedures for Professional Services
- > LPA Invoicing
- > Preliminary Engineering
- > Special Match Credit

LPA Civil Rights

- OCR-481-LPA - Disadvantage Business Enterprise
- OCR-482- Certification of Payment to Firms
- OCR-483-LPA - Commercially Useful Function Rpt
- OCR-484-LPA - Cert Of Payment To Subcontractors

Manuals & Forms

- Design Exception Variance Template
- LPA Sampling & Testing Proposal
- LPA-100
- LPA-700
- Right Of Way Certification Report
- TAP Application Form
- ENV-160-LPA
- PDM Manual
- TAP Information Document

Important Notices

- 2019 Project Development Manual Training Schedule
- Emergency Road & Bridge Repair Fund (ERBRF)
- Jackson ATSSA

Emergency Relief Projects

- Best Practices Summary
- FHWA ER Manual
- DDIR Form
- List Engineers
- Emergency Work Form
- Memorandum of Agreement
- Vehicle & Equipment Rental Rates
- Emergency Relief Overview

Resources

- LPA Training Certificate
- LTAP Traffic Control
- FHWA Videos
- Electronic Bidding
- Projectwise
- External Account Management
- Sample Search
- STIP

References and Contact Information

FHWA

- Web Site: <https://www.fhwa.dot.gov/programadmin/erelief.cfm>
- ER Manual (Updated May 31, 2013) Link: <https://www.fhwa.dot.gov/reports/erm/er.pdf>
- ER Questions and Answers: <https://www.fhwa.dot.gov/map21/qandas/qaer.cfm>

Contact Information

- Lee Frederick, PE, MDOT State LPA Engineer, lfrederick@mdot.ms.gov

Contacts Around the State of MS

Each District has a District LPA Engineer that will be able to assist you through the ER process from the beginning of your project, to its completion.

LPA DIVISION

Staff Officer - Paula Morgan

State LPA Engineer - Lee Frederick, P.E

Staff Officer - Donna Ellis
Staff Officer - Necole Baker

District 2 LPA Engineer

Brian Copeland, P.E., LPA Engineer
(662) 563-4541

District 1 LPA Engineers

Travis Wampler, P.E., LPA Engineer
Jeff Wages, P.E., Asst. LPA Engineer
(662) 842-1122

District 3 LPA Engineer

Eric Morgan, P.E. LPA Engineer
(662) 746-2513

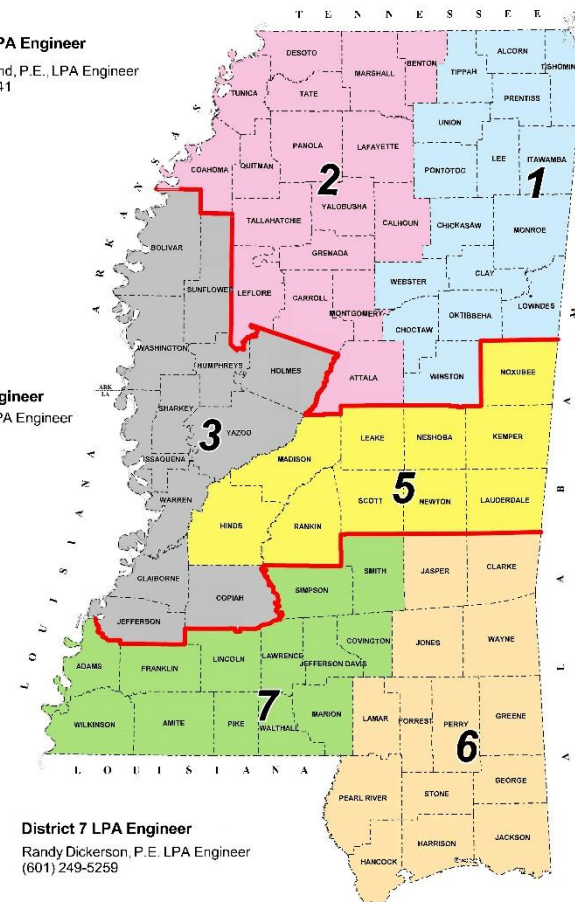
District 5 LPA Engineer

Robby Pierce, P.E., LPA Engineer
(601) 683-3341

(City of Jackson)
LPA Division
(601) 359-7277

District 6 LPA Engineer

David Seyfarth, P.E. LPA Engineer
Chuck Starita, P.E., Asst. LPA Engineer
(228) 832-0682



District 7 LPA Engineer

Randy Dickerson, P.E. LPA Engineer
(601) 249-5259

Questions?